

VOTING MACHINE SPECIALIST

November 2020 Presidential Election



Prince William County Office of Elections

I am me! You are you! Why are we here?

- We are here to go over the Voting Machines
- We will go over the Scan Machine
- We will also go the Touch Writer (ADA)



Prince William County Office of Elections

House Keeping

- Vote early
- Call the office and your Chief if you cannot serve
- Questions? Call the office 703-792-6470 then press 0



Prince William County Office of Elections

News and Updates

- COVID-19 is changing things
- Personal Safety is very important
- Poll Access
- Training Materials, eopwc.com




Prince William County Office of Elections



When you see this page in Poll Access you can and should let us know if you are interested in working any future Elections.





Poll Worker Online Web Access

Eastern Standard Time: Wednesday, May 27, 2020 7:35:00 PM

Home

Messages

My Assignment

Work Assignment

Training Classes

Training Materials

My Profile

Technical Help

Logout

Save

Next to My Assignment >>

Upcoming Elections (3)

2020 June Dual Primary

Election Date	06/23/2020
Interested In working?	<input type="checkbox"/> Yes <input type="checkbox"/> No
	<input type="checkbox"/> Outside Home PCT?

Nov 3 2020 Pres General AB

Election Date	From 09/18/2020 To 10/31/2020
Interested In working?	<input type="checkbox"/> Yes <input type="checkbox"/> No
	<input type="checkbox"/> Outside Home PCT?

Prince William County Office of Elections

Workshops at Buckhall VFD

- Address 7190 Yates Ford Rd Manassas, VA 20111
- 5 – 8 October 10 am – 8 pm 10 October 9 am – 3 pm
- 12 – 15 October 10 am – 8 pm 17 October 9 am – 3 pm
- 19 – 22 October 10 am – 8 pm 24 October 9 am – 3 pm
- 26 – 29 October 1 pm – 8 pm 31 October 9 am – 3 pm
- If you are taking online training you need to come to Buckhall VFD to get your Election Officer Manual

Prince William County Office of Elections

THINGS YOU DO TO HELP YOUR CHIEF

- There are certain actions you will perform during machine set up that helps your Chief, and we will go over them.
 - Ballot Box and Emergency Ballot Bag -- Are they empty?
 - Print Reports -- How many and when
 - Print Reports – Three zero tapes from Scan and One from TW
 - Tapes from Scan – Tape one on wall, place others in Envelope #2
 - Tapes from TW – Tape on wall, place in Envelope #8 at end of night
 - Red Numbered Seals --How do we keep track
 - White Seals – What are they for



Prince William County Office of Elections

NUMBERED RED SEALS and White Seals

- Numbered Red Seals are used to secure the V Drives in the voting machines.
- White unnumbered seals are used on the ballot box and bags **ONLY** after they are verified empty.
- White seals can be cut and replaced during the day ONLY IF NEEDED
 - WHY - Only if your SCAN(S) go down.
- Red seals are cut ONLY AFTER 7:00 PM.
- ALL seals are cut after polls are closed and all voters have left the precinct after 7:00 PM.
- **The Red Seal numbers are written on the back of envelope #7 after polls close.**



Prince William County Office of Elections

Back of Envelope #7

THIS ENVELOPE CONTAINS KEYS TO VOTING MACHINES OR
DATA STORAGE UNIT(S) AND VOTING EQUIPMENT SEAL(S) LISTED BELOW:

712

Voting Machine Serial Number	Red Seal Number		Lifetime Count Number		Ballot Count Number	
	OPEN	CLOSE	OPEN	CLOSE	OPEN	CLOSE
Scan: S1500031503	110		5477		0	
Scan:					0	
Touch Writer: W1500012202	1443		14		0	



WE ARE GOING TO USE THE ELECTION OFFICER GUIDE TO SET UP THE MACHINES

If your precinct is provided two SCANS you are REQUIRED TO SET THEM BOTH UP

OPEN YOUR EO GUIDE TO VM TAB/TAB #3



Prince William County Office of Elections

I AM GOING TO DEMONSTRATE SETTING UP SCAN



Prince William County Office of Elections

Get in pairs and set up the Scan using the EO Guide

Take your seat and go back to your EO Guide



Prince William County Office of Elections



I AM NOW GOING TO DEMONSTRATE SETTING UP TOUCH WRITER



Prince William County Office of Elections

ADA MARKING DEVICE SIGN



Place this sign
as shown on the
TW on Election Day



Prince William County Office of Elections

Go to the same area
and set up the TW
using the EO Guide

Take your seat and go back to your EO Guide



Prince William County Office of Elections



I WILL NOW
DEMONSTRATE
OPENING POLLS ON
BOTH MACHINES



Prince William County Office of Elections

Go to the same area and open polls on both machines using EO Guide

Take your seat and go back to your EO Guide



Prince William County Office of Elections

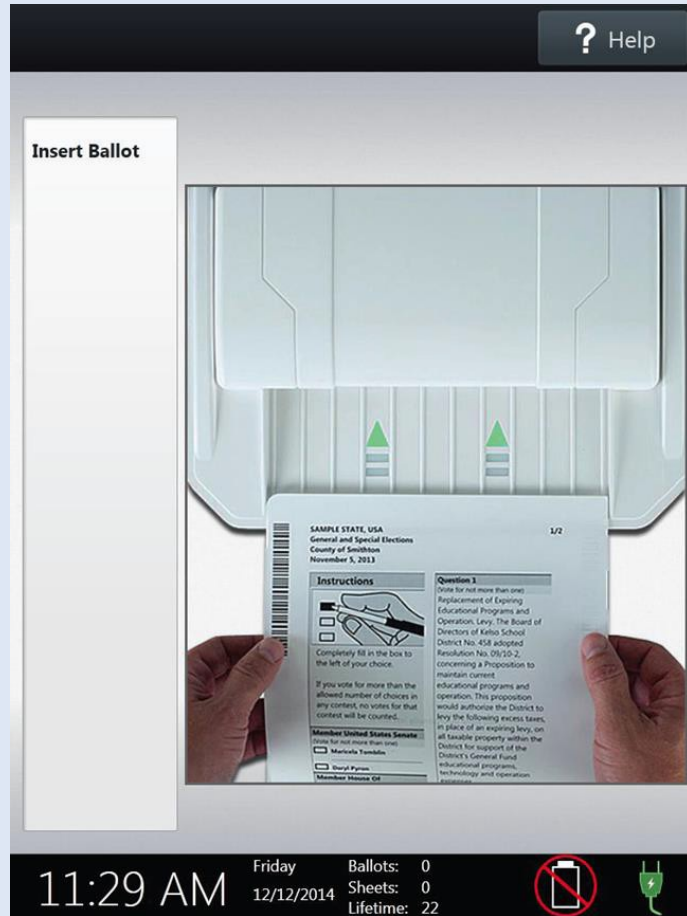
Voting Machine (Scan) Orientation

- What happens on the screen
 - Could be GOOD
 - Could be BAD
- What happens on the back
 - The blue light on the back of the Scan gives you, the EO a clue into what the voter sees
- What about the thermal printer
 - Red (or pinkish) lines on the printer tape means you are running out of thermal tape

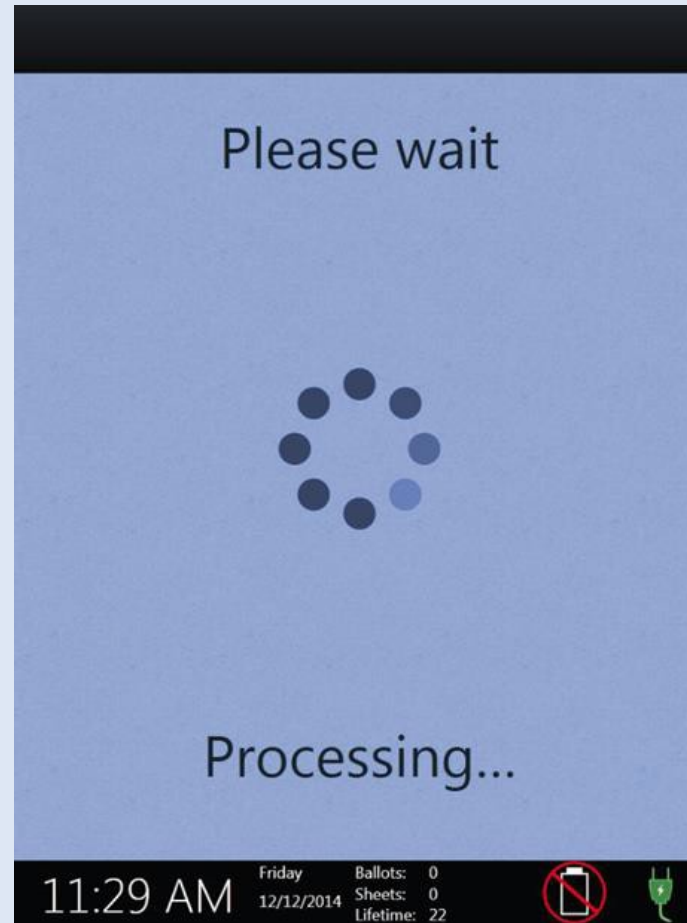


Prince William County Office of Elections

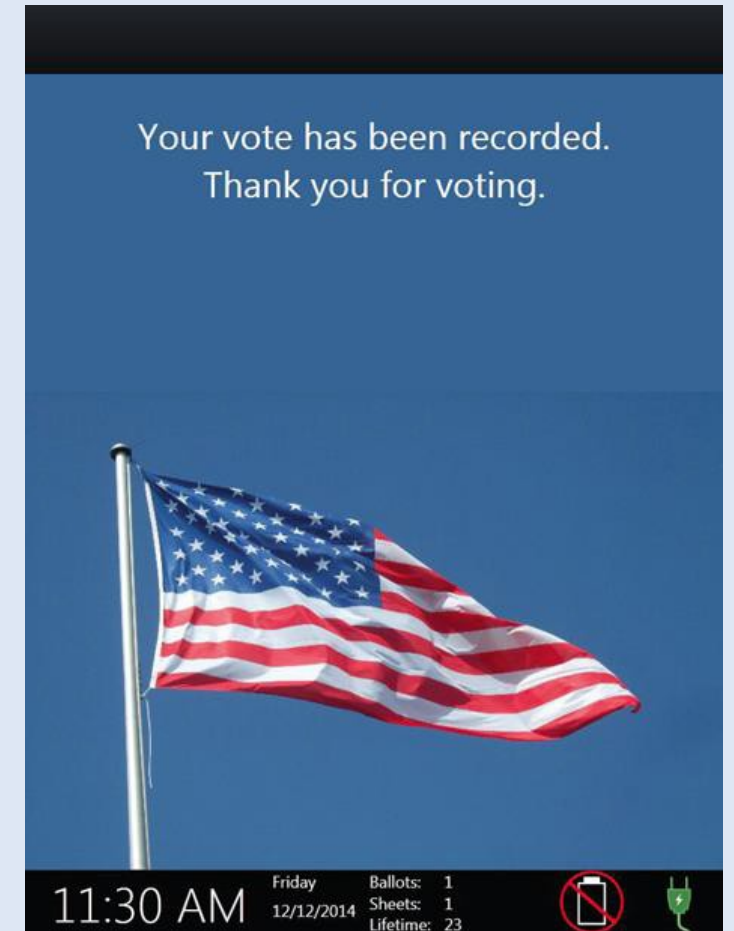
Good Screens



Solid



Flashing



Solid

Prince William County Office of Elections

Back of the Scan



Prince William County Office of Elections

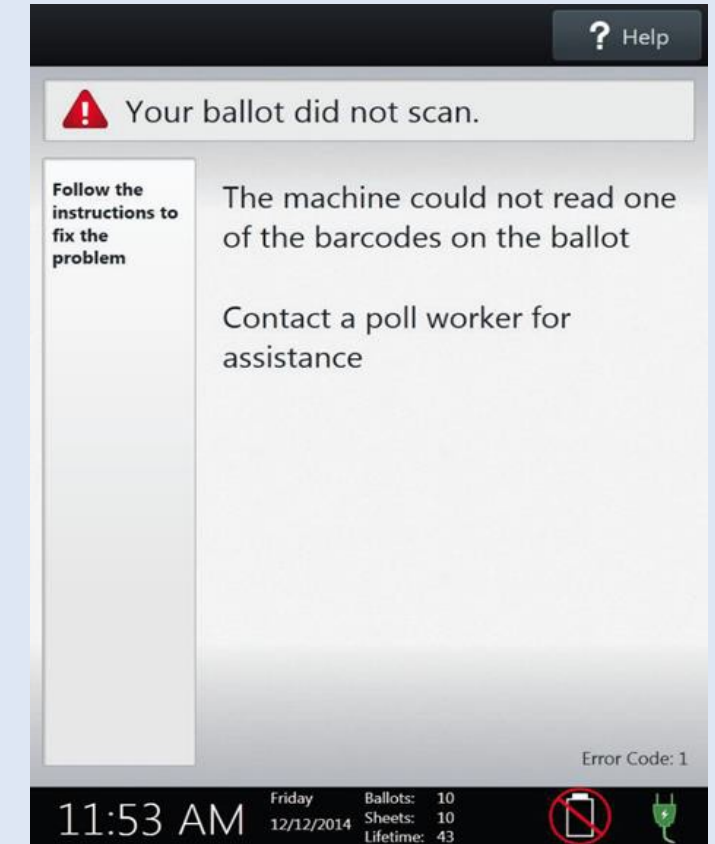
Evil Screens



FLASHING



FLASHING



FLASHING

Prince William County Office of Elections

Power Indicators



Prince William County Office of Elections



Thermal Printer on Scan and TW



If you are running out of thermal tape, you will see a red (or pinkish) line down the side of the paper tape. This indicates that you need to replace the roll with a new thermal tape roll.



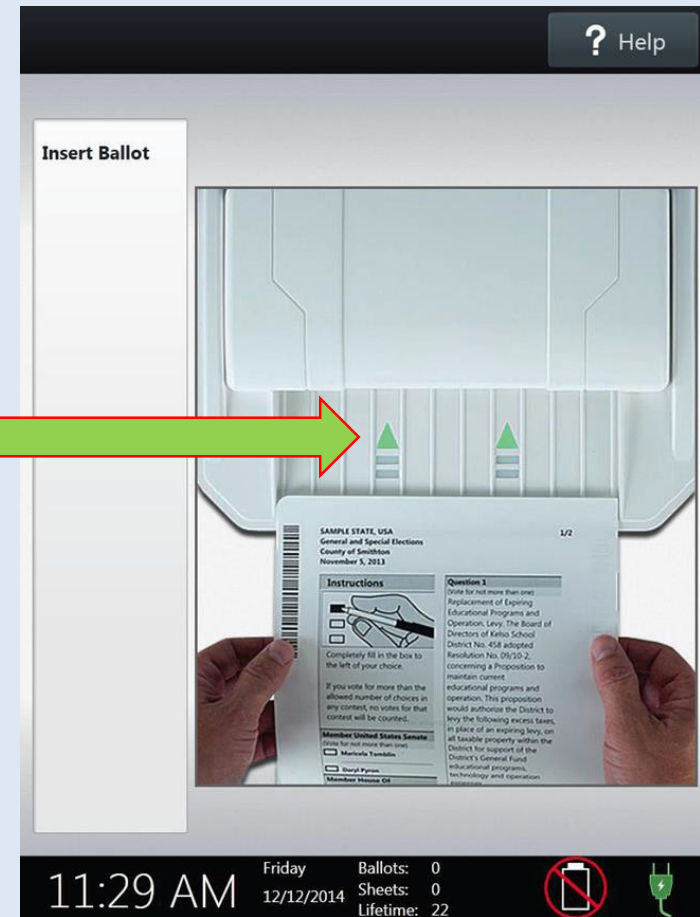
Prince William County Office of Elections

Casting Ballots

Flashing Green Lights means the ballot can be inserted into the Scan. Scan is ready for the next voter.

Green
Flashing
Lights

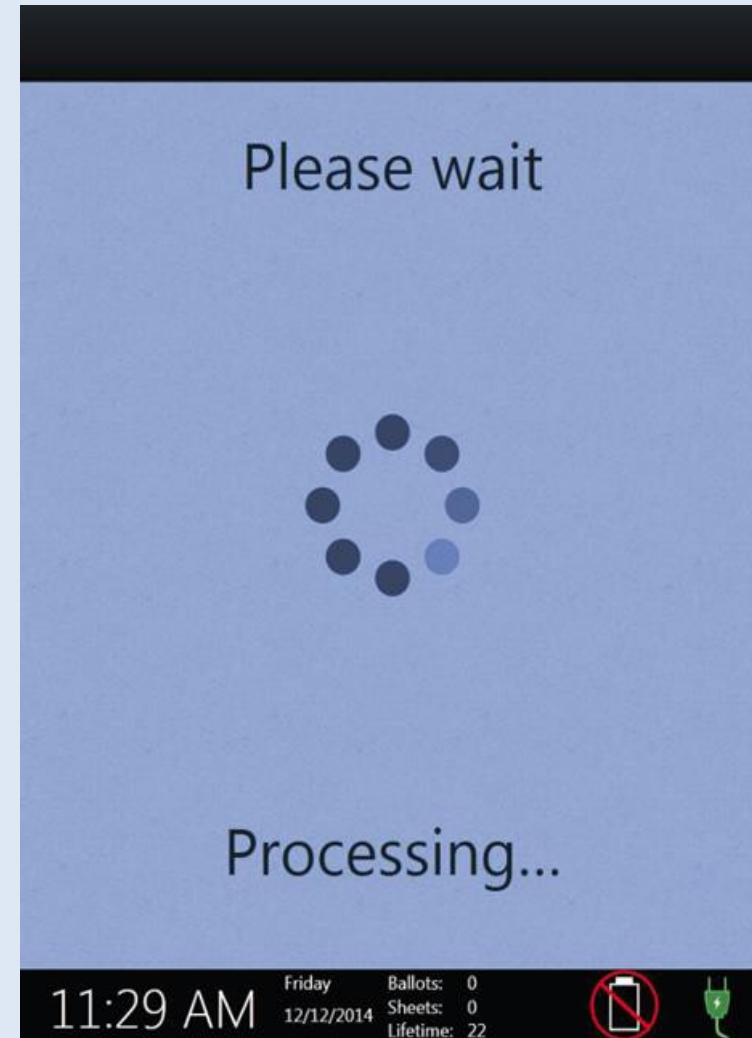
Insert Ballot Screen



Prince William County Office of Elections

Casting Ballots

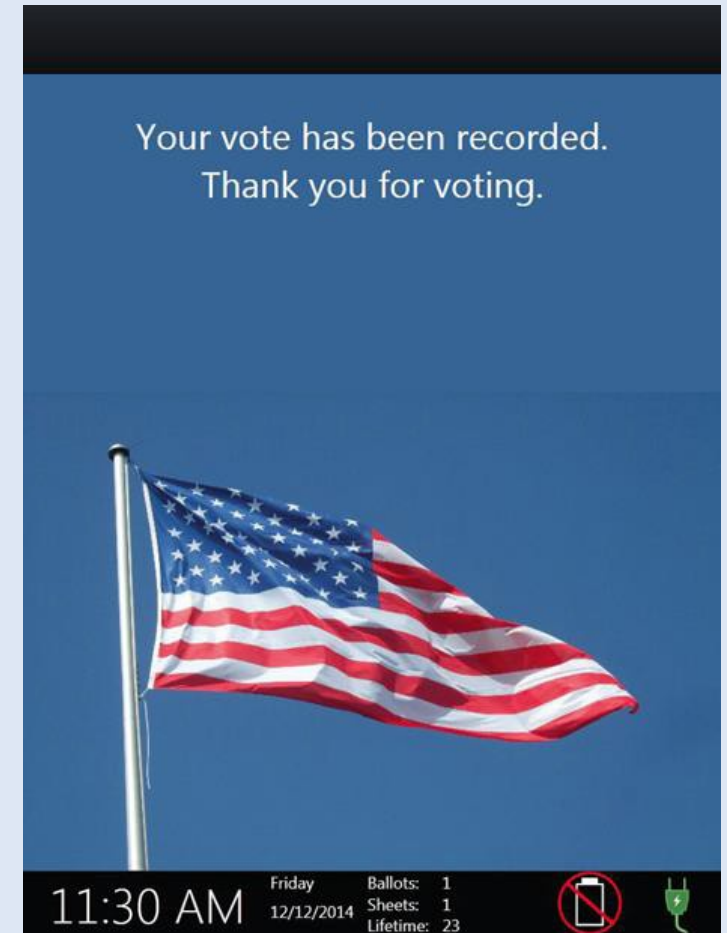
This “spinning wheel” screen is what the voters sees while Scan is taking their ballot.



Prince William County Office of Elections

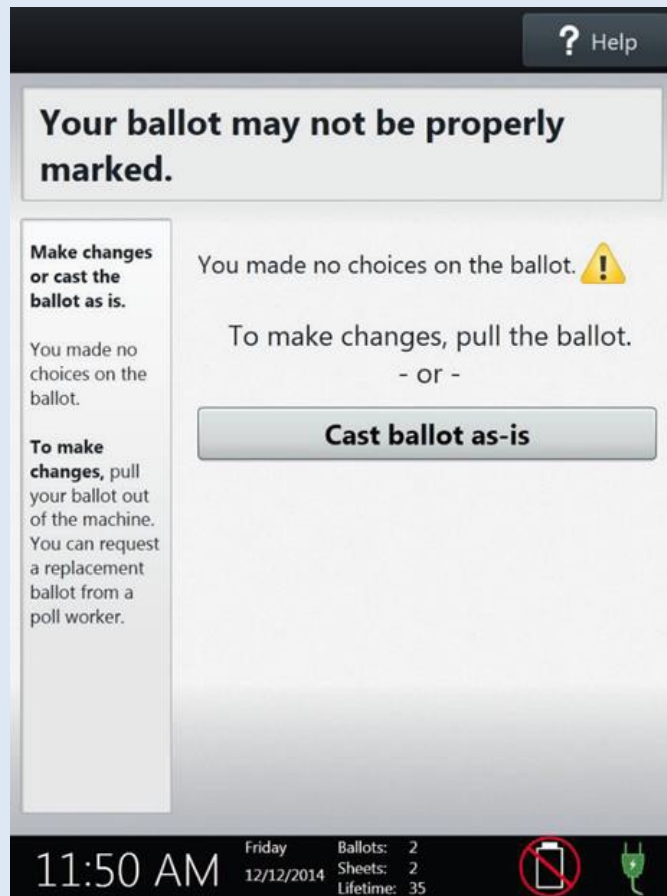
Casting Ballots

- Every voter should be told to look for the American Flag
- When the Voter sees the American Flag it means that their ballot has been cast
- You (the Officer of Election) assisting voters at the Scan will hear a ring (or beep). This is your audible cue that the voter successfully cast their ballot



Prince William County Office of Elections

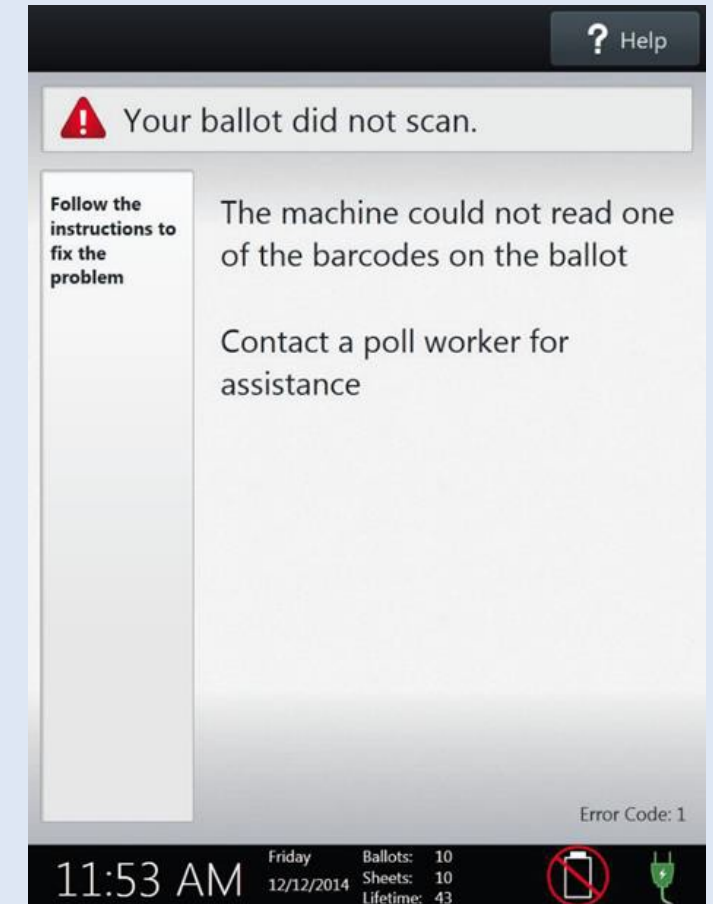
Scanning Problems – Evil Screens Again



FLASHING



FLASHING



FLASHING

Prince William County Office of Elections

Scanning Problems

If, for some reason, the ballot did not scan you should have the voter try to scan again. If that also fails send them to the chief to receive a new ballot. The first ballot will be spoiled before the voter is given another ballot.

Assure the voter that sometimes ballots are simply defective and let them know that they (the voter) will be given a replacement ballot.



Prince William County Office of Elections

Scanner rejected the ballot?

1. Voter will have another opportunity to correct their ballot:

IF THE BALLOT IS NOT MARKED the machine will reject the ballot and allow voter to correct the ballot or cast **AS-IS**

If voter **OVER VOTED** the ballot the machine will reject the ballot and voter will be allowed to get a new ballot or cast **AS-IS**

2. Voter will not have an opportunity to correct their ballot if they **UNDER VOTED**: The machine will except undervoted ballots.



Prince William County Office of Elections

Undervotes and Overvotes

Under Voting is when the voter has not selected all the choices on their ballot. They are not required to vote for all offices or issues on the ballot, so the machine will take the ballot.

Over Voting is when the voter has selected more choices on one office or ballot issue than allowed. The machine will reject the ballot.

If requested we can assist voters who ask for help before they cast their ballot on the scanner.



Prince William County Office of Elections

Touch Writer Orientation

Once the polls are open, this is the home screen for the Touch Writer

The image shows the home screen of the Touch Writer interface. At the top, there is a black navigation bar with three buttons: "Audio" (with a speaker icon), "AA Screen" (with a text icon), and "? Help" (with a question mark icon). Below this bar is a white header box with the text "Enter your access code". The main area has a light blue background. On the left, there is a white box containing the text "Enter your access code" and instructions: "To start your ballot, enter your access code by touching the numbers. When you have entered all numbers of your code, touch 'Accept.' If you do not have an access code, contact a poll worker." To the right of this text is a large white input field with a brown "X" button to its right. Below the input field is a numeric keypad with buttons for numbers 1 through 9 and 0. At the bottom right, there is a blue "Accept" button.

Prince William County Office of Elections

Touch Writer Orientation



Prince William County Office of Elections

Issuing, Marking, and Printing Ballots with the TW

- EO Press Blue Poll Worker Button
 - Poll Worker Code
 - Ballot Access Code
 - Choose and Confirm Ballot Style
- Voter Enter Access Code
 - Mark Ballot (Print blank ballot if voter wants blank)
 - Print Ballot
 - Scan Ballot

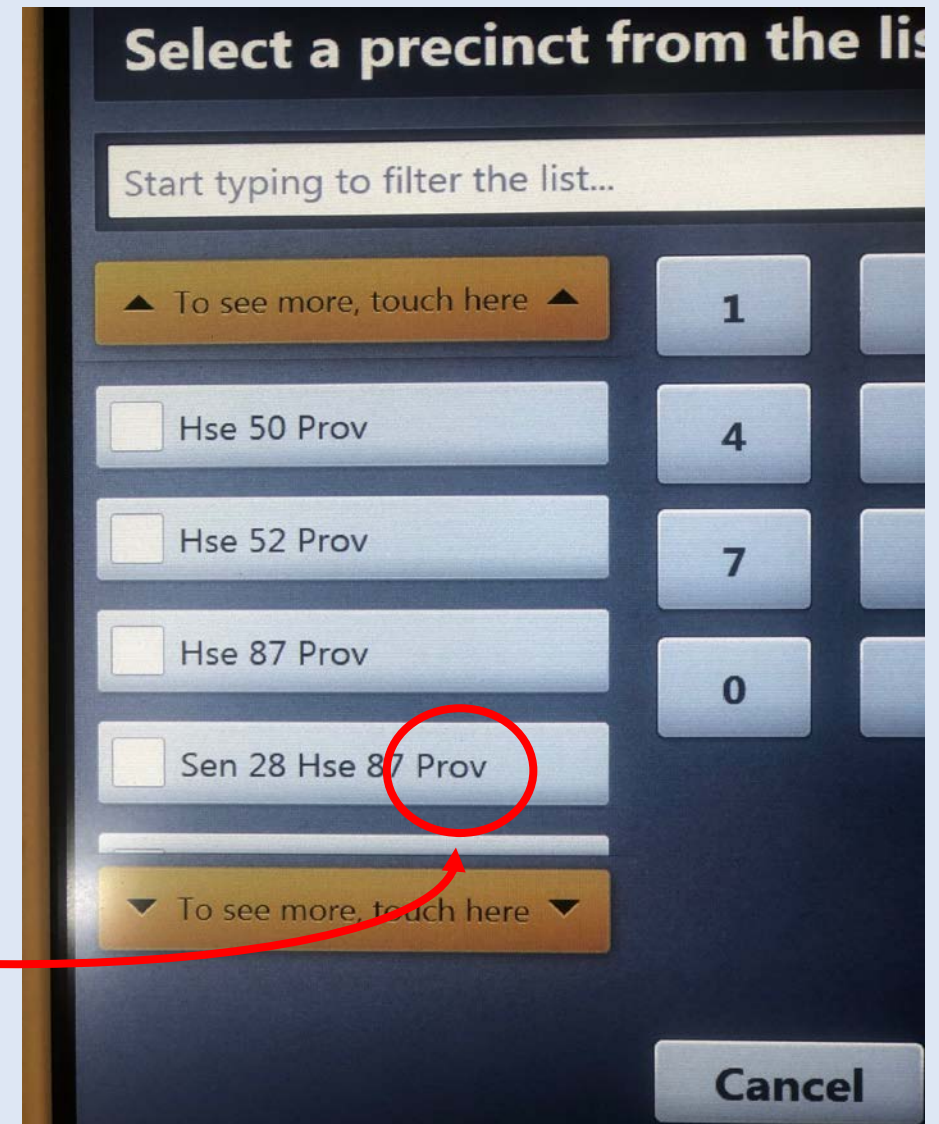


Prince William County Office of Elections

Ballot Styles

This is a picture of the available ballot styles in your precinct.

If you need to print a provisional ballot be sure to select the ballot that says “Prov” at the end




Prince William County Office of Elections

Go to the same area, print
one blank, one marked
ballot, then scan both
ballots.

Take your seat and go back to your EO Guide



Prince William County Office of Elections



SPOIL BALLOT

- Spoiling a ballot on TW
 - Blue Poll Worker Button
 - Poll Worker Code
 - Spoil Ballot



Prince William County Office of Elections

Closing Polls on Scan and TW

- After it is announced that the polls are closed AND after ALL voters have left the precinct the VM Officer will cut the white seal in the rear of the ballot box so you can check the emergency ballot bag.
- If there are any ballots in the bag ALL EOs need to gather around, then scan ALL the ballots that are in the emergency ballot bag.
- Now you can close polls on the machines. NEVER CLOSE POLLS ON THE EQUIPMENT BEFORE 7:00 PM



Prince William County Office of Elections

THINGS YOU DO TO HELP YOUR CHIEF

- There are certain actions you will perform doing machine break down that helps your Chief, and we will go over them.
- Emergency Ballot Bag – empty and scan ballots
- Print Reports – Three tally reports from Scan, three write-in reports from scan, and one ballot count tape report from TW
 - Tapes from Scan – Envelope #2
 - Tapes from TW – Envelope #8
- New Red Seal Numbers – Back of envelope #7
- All cut Seals – Inside envelope #7
- V Drives – Envelope #11
- Ballot Box – Empty and place all scanned ballots in Envelope #3



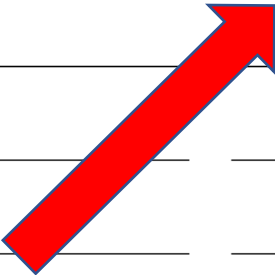
Prince William County Office of Elections

Back of Envelope #7

THIS ENVELOPE CONTAINS KEYS TO VOTING MACHINES OR
DATA STORAGE UNIT(S) AND VOTING EQUIPMENT SEAL(S) LISTED BELOW:

712

Voting Machine Serial Number	Red Seal Number		Lifetime Count Number		Ballot Count Number	
	OPEN	CLOSE	OPEN	CLOSE	OPEN	CLOSE
Scan: S1500031503	110	NEW SEAL #	5477		0	
Scan:		NEW SEAL #			0	
Touch Writer: W1500012202	1443	NEW SEAL #	14		0	



Prince William County Office of Elections



DEMONSTRATE CLOSING POLLS AND BREAK DOWN ON BOTH MACHINES



Prince William County Office of Elections

Go to the same area,
close polls and break
down both machines
using EO Guide

Your training is complete



Prince William County Office of Elections

THANK YOU AND I
WISH YOU ALL THE
BEST